

National Land & Water Resources Audit

An Initiative of the Natural Heritage Trust



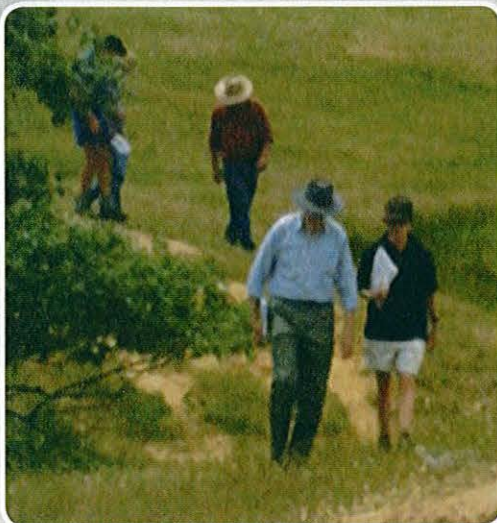
National Land & Water Resources Audit

About the Audit

The National Land & Water Resources Audit (the Audit) collates data and information on the status of Australia's natural resources and contextual social and economic information.

The information is used to assist in identifying Australia's natural resource management priorities and will be used to support the evaluation of current and future natural resource management (NRM) investments.

The Audit is working with all States and Territories and the Australian Government to develop systems to monitor resource condition. This collaborative partnership provides considerable opportunities to share information about the state of the natural resources and lays a foundation for a consistent flow of information measuring the health of the nation's resources.



Our clients

The National Land & Water Resources Audit primary clients are the people who make decisions about Australia's natural resource priorities within government. Regional natural resource management organisations and industry groups are key stakeholders in ensuring the information collated is relevant.

The Audit reports to the Natural Heritage Trust Ministerial Board and is an independent national program funded by the Natural Heritage Trust. It is currently in its second phase (2002 – 2007).

How the Audit's doing it.

The Audit works in partnership with State agencies to assist in the identification of national information needs. State agencies are currently the major repositories for the natural resource data that is required for national reporting.

The Audit also works with State agencies to support regional groups reporting on resource condition change as a result of NRM investments.

The Audit coordinates data and information standards through National Coordination Committees.

The Committees advise the Audit on national information needs for each Natural Resource Theme /Issue or 'Matter for Target' under the National Natural Resource Monitoring & Evaluation Framework (NM&EF). The Committees advise on issues such as soil, salinity, water etc.

The Audit uses this advice to progressively update information about the status of the natural resources.

Specifically the National Coordination Committees:

- refine the National Natural Resource Condition Indicators
- develop the protocols for the Indicators
- determine data needs and availability
- report to the Audit, on potentially useful information products.

The Audit produces reports on natural resource management information and on condition using biophysical, social and economic information.



Natural Heritage Trust

Helping Communities Helping Australia

An Australian Government Initiative

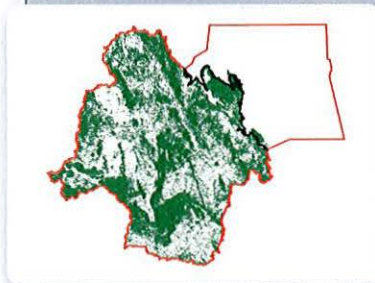
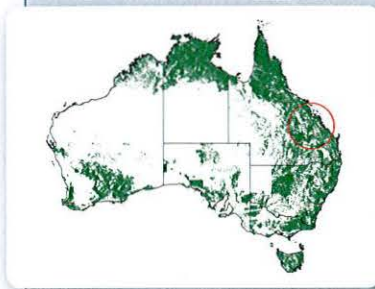
THE AUDIT PROVIDES DATA, INFORMATION AND NATIONWIDE ASSESSMENTS OF AUSTRALIA'S LAND, WATER AND BIOLOGICAL RESOURCES TO SUPPORT SUSTAINABLE DEVELOPMENT

Want more information?

Key activities–

The National Land & Water Resources Audit has six key areas of activity.

- 1) Developing a consistent national reporting mechanism for collating natural resource information collected under the National Natural Resource Monitoring and Evaluation Framework (NM&EF). This will allow access to and progressive identification of information to support the evaluation of government investments in natural resource management.
- 2) Collating information to support the National State of the Environment (SoE) Reporting – ensuring efficiencies in information collection to serve multiple purposes.
- 3) Developing nationally consistent, but regionally relevant integrated resource condition reports linking biophysical, social and economic information.
- 4) Facilitate reporting on the on-going collection of natural resource information for key theme areas including those related to the National Natural Resource Monitoring and Evaluation Framework by developing a strategic information capture program.
- 5) Reporting on National Data and Information Management (in collaboration with ANZLIC – the Spatial Information Council) – ensuring information is managed to allow ready access by those who need it.
- 6) National Resource Assessments. Delivering reports, as specifically requested by clients, on the state of knowledge of natural resource issues.



Native forests and woodlands at national, state and regional scales

Contact

National Land & Water Resources Audit

Tel: (02) 6263 6039

Email: info@nlwra.gov.au

Go to: www.nlwra.gov.au

Further information

www.nlwra.gov.au

Other information sheets in the 'About the Audit' series include;

- Monitoring and Evaluation of Natural Resources
- National Data and Information Management
- National Coordination
- Signposts for Australian Agriculture
- Social and Economic

To download a copy go to:

www.nlwra.gov.au

Subscribe

If you would like to receive information about the Audit's email,

Email: info@nlwra.gov.au

www.nlwra.gov.au

